



D.A.F. Scheuter-van Oers<sup>1</sup>, G.C.A. van Dongen-Segeren<sup>2</sup>, A.C. van Kooij<sup>2</sup>, T. van der Marel<sup>2</sup>, E.E. Versluijs-Rovers<sup>2</sup>, M.A. van den Dorpel<sup>3</sup>

1 Specialized nurse, 2 Social worker, 3 Nephrologist

Division of Nephrology, Maasstad Hospital, Rotterdam, The Netherlands

### Introduction

Close cooperation between nephrologist, nurse coordinator and social workers in a large non academic hospital. By timely starting the process of education and examinations we have increased the possibilities of pre-emptive transplantation.

### Procedure

When a patient needs to be informed about renal replacement therapy, the digital patient program is used by the nephrologist to inform all necessary disciplines involved. They each will make an appointment within the given time slot with the patient. **At first** the social worker starts the education process, preferably, in the home situation. General information about the procedures and actions to be taken in the coming period, is given to the patient and his family/friends. They support patients in making difficult decisions. **Secondly**, the nurse coordinator in the process, gives information about all options in renal transplantation and gives an explanation about the test procedures which are necessary to decide if patients are able to receive a kidney and donors are appropriate candidates. In case of availability of a potential donor, information is directly given about living donation and the procedure can directly be started. The nurse coordinator ensures that the patient and potential donor complete all required tests in the shortest time possible in their own hospital.

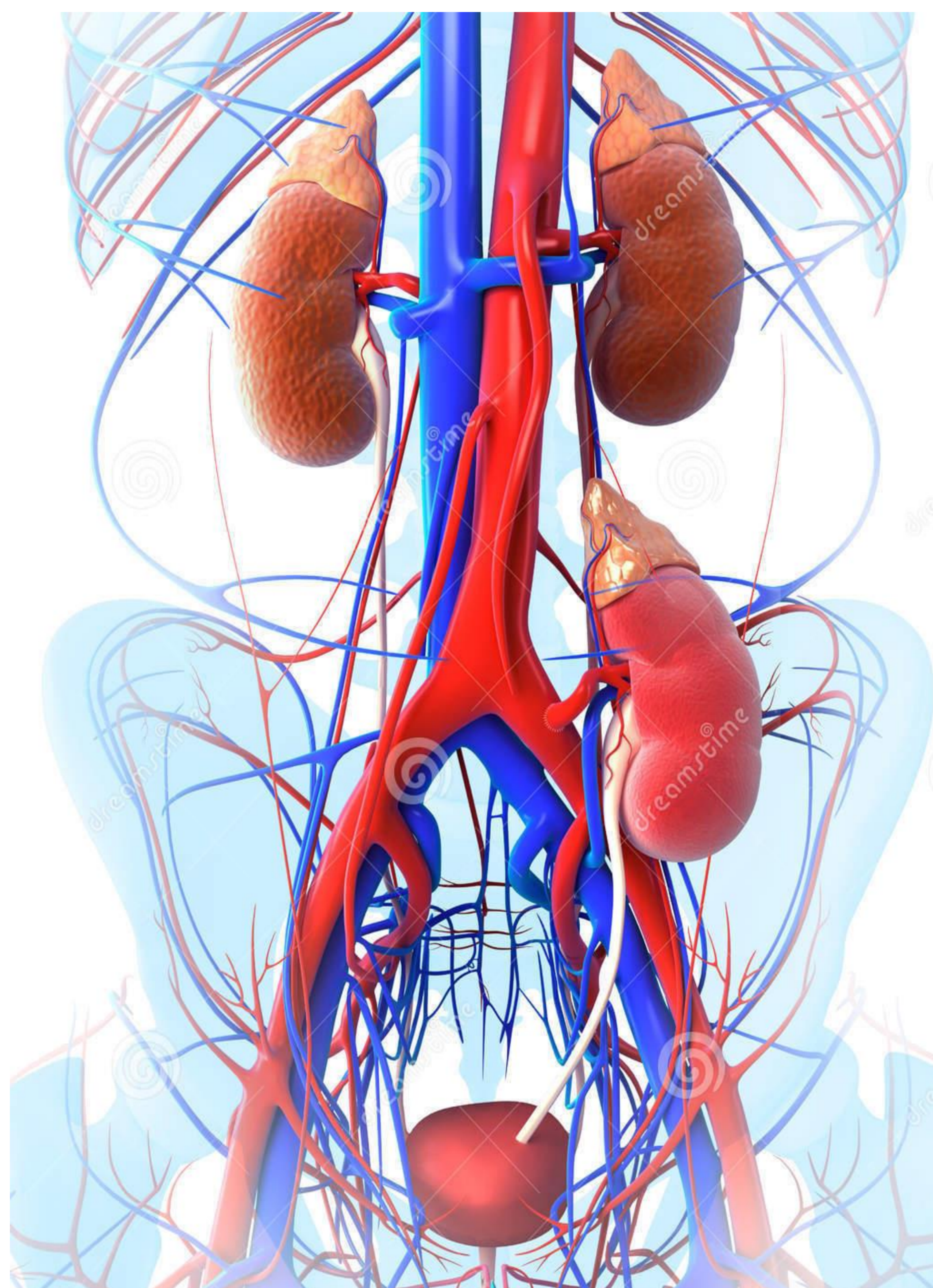
The close cooperation consists of daily deliberation between all disciplines and quickly changing the process of a patient or donor when needed. The progress is reported in the digital file and everyone involved will be informed.

### Results

From 2013 until 2017 (4 years)

289 patients entered the program. 315 donors (for 167 recipients) entered the program. 116 couples have been approved and presented for transplantation of which 51 couples have been transplanted, 40 couples have been put on hold because of a stabilised kidney function. 25 couples are still in the work up program.

8 recipients were not transplantable due to medical/psychological reasons. The median work up time of the procedure of the recipients was 102 days from start of the process to transfer to the transplant centre. (2014-2015) Various patient/medical retarding factors are described. The median work up time for the donors was 88 days (2014-2015)



Copyright © 2000-2015 Dreamstime

### Discussion

Patients and family are well informed about the treatment options, with a special attention for kidney transplantation. The efficient work up program in the patients treating hospital, results in a significant improvement of the possibility of pre-emptive renal transplantation, or otherwise, patients are earlier registered on the waiting list.

