

RENAL TRANSPLANTATION IN ROMANIA: A SURVIVAL ANALYSIS

Gabriel Ștefan¹, Liliana Garneata^{1,2,3}, Cristina Bucsa⁴, Mihai Harza^{2,4}, Ioanel Sinescu^{2,4}, Gabriel Mircescu^{1,2,3}, Dorina Tacu⁴

¹“Dr Carol Davila” Teaching Hospital of Nephrology, Bucharest, Romania

²“Carol Davila” University of Medicine and Pharmacy, Bucharest, Romania

³Romanian Renal Registry, Bucharest, Romania

⁴Urological Surgery, Dialysis and Renal Transplantation Center, Fundeni Clinical Institute, Bucharest, Romania



BACKGROUND

According to the Romanian Renal Registry (RRR), only 8% of patients on renal replacement therapy (RRT) in 2012 received a kidney transplant (KTx). As not all transplant centers report to RRR, the outcome of transplanted patients in Romania is not known.

We aimed to evaluate the outcome in patients grafted in one of the largest transplant center in the country as compared to hemodialysis (HD) and peritoneal dialysis (PD) patients recorded by the RRR.

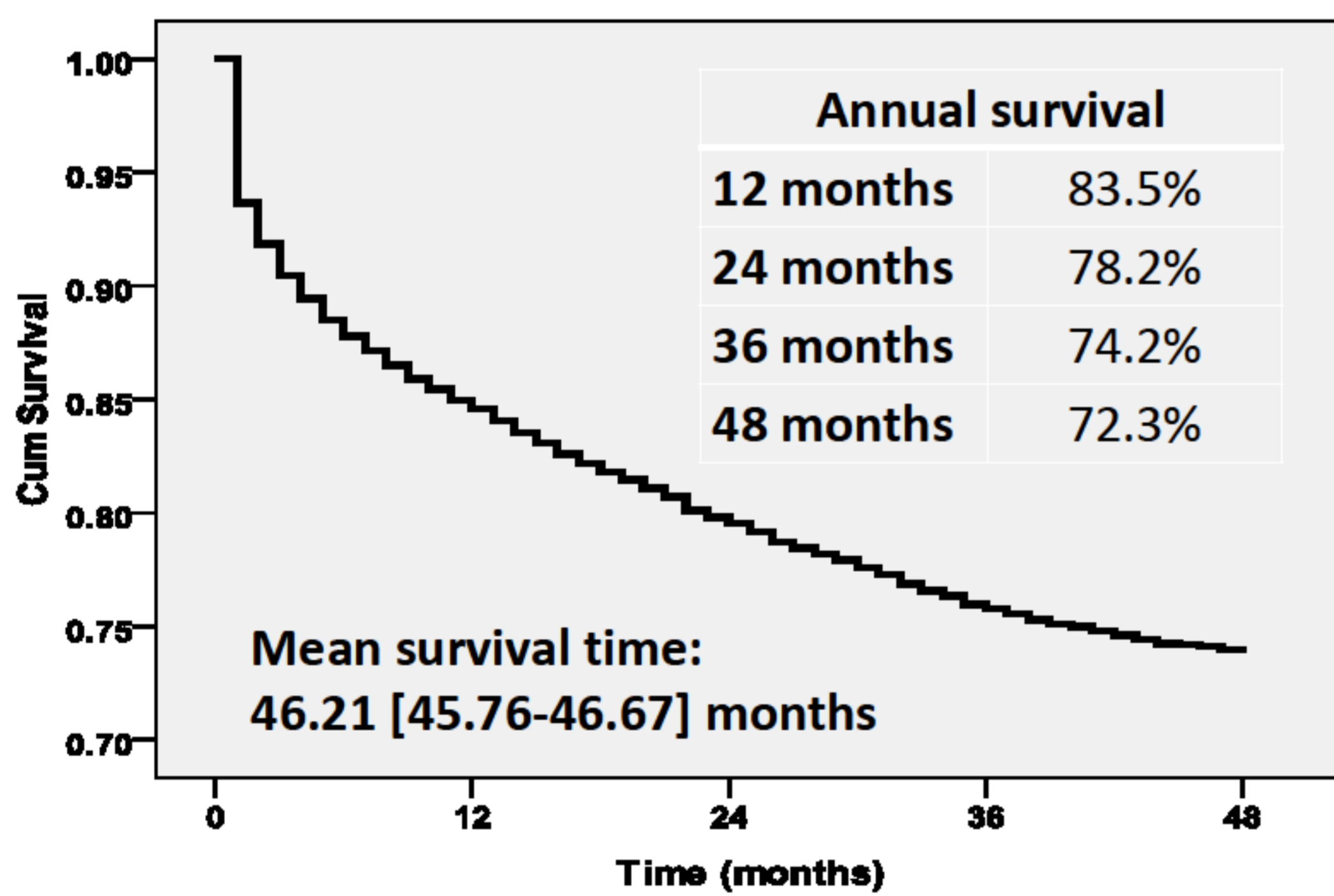
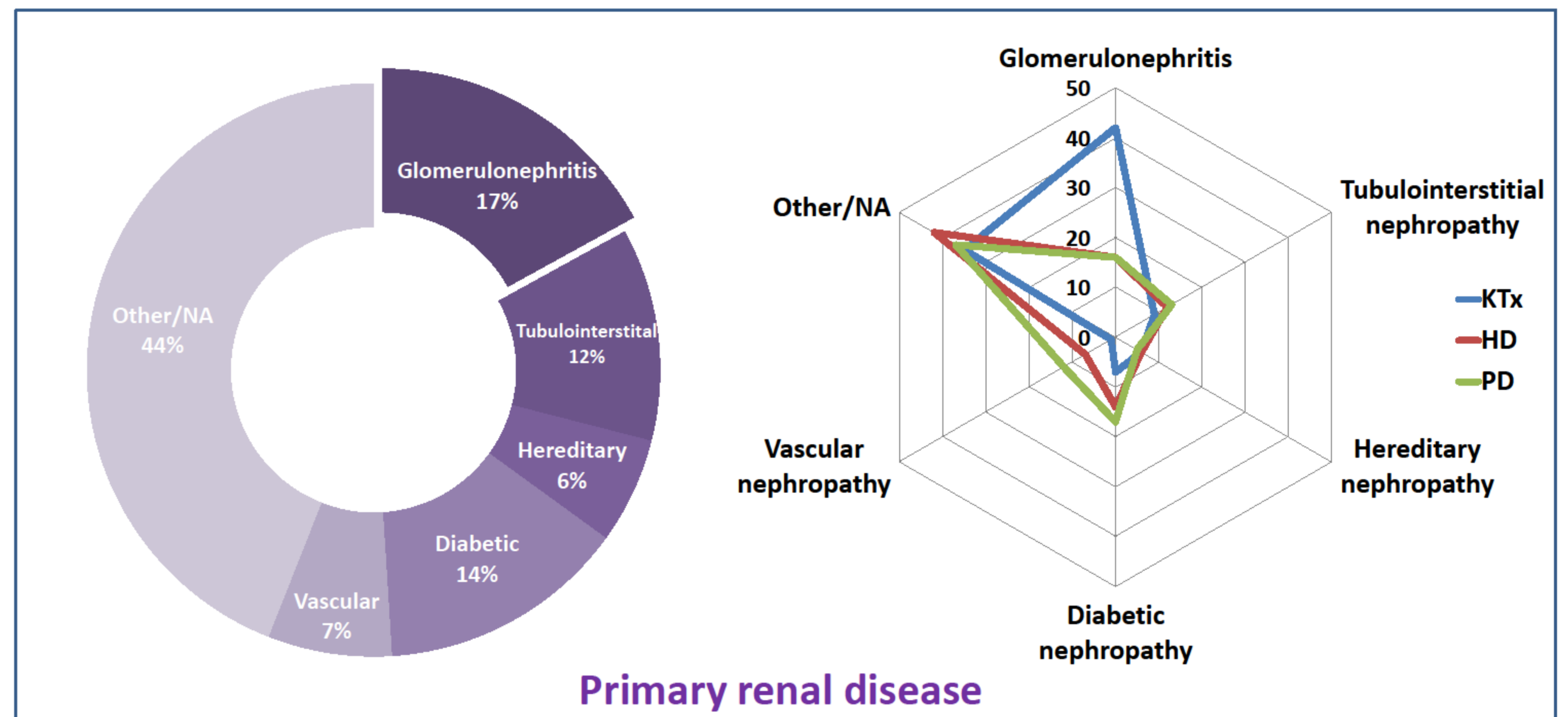
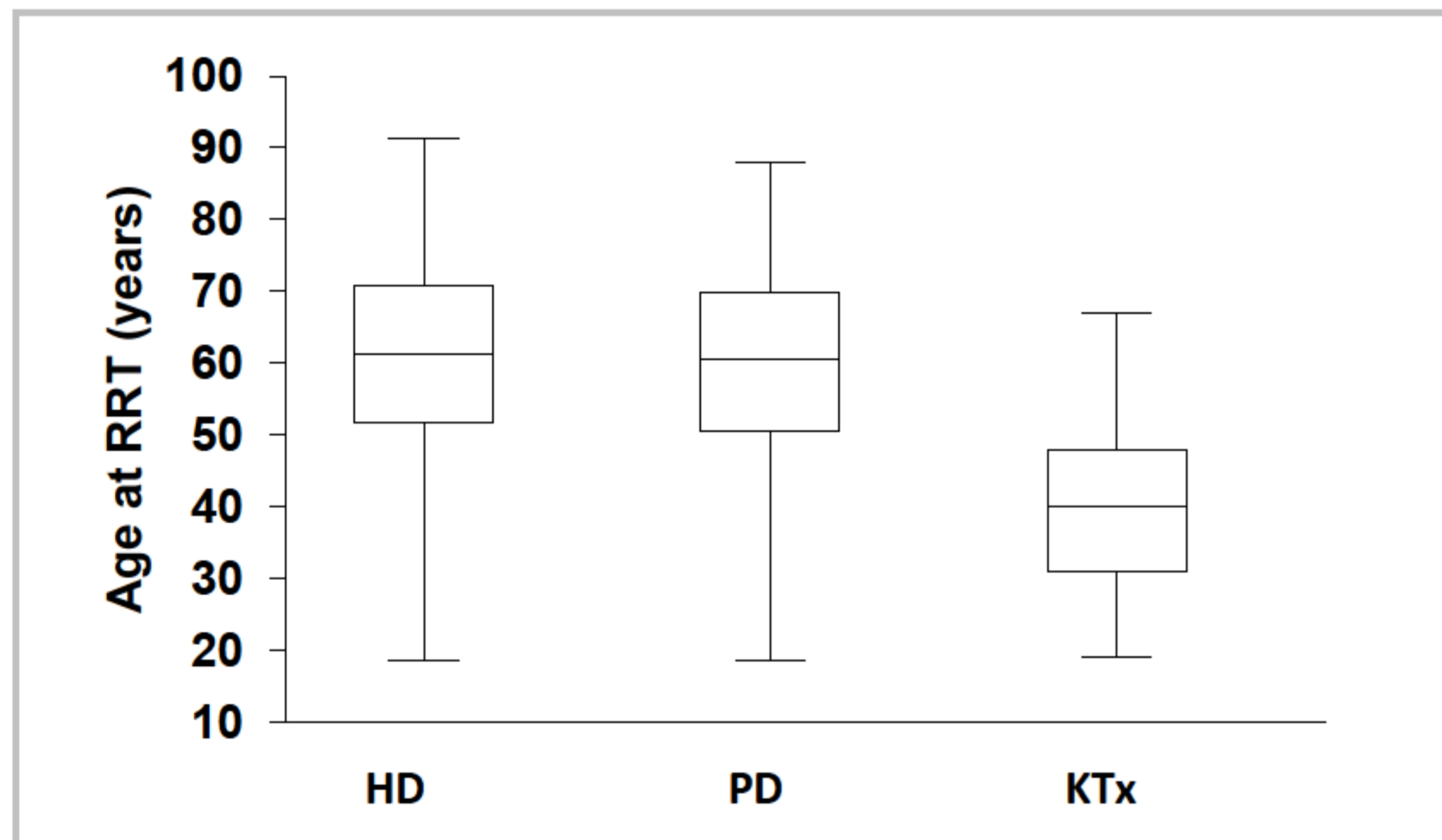
METHODS

We retrospectively examined the outcome at 31 December 2012 of 9540 patients (60.3 [60.0-60.9] years, 57% male) who started RRT between 1 January 2008 and 31 December 2011. The patients were stratified by modality at day 90 of therapy: KTx, HD or PD. We excluded patients younger than 18 years, those who recovered renal function or were lost to follow up during the first 90 days.

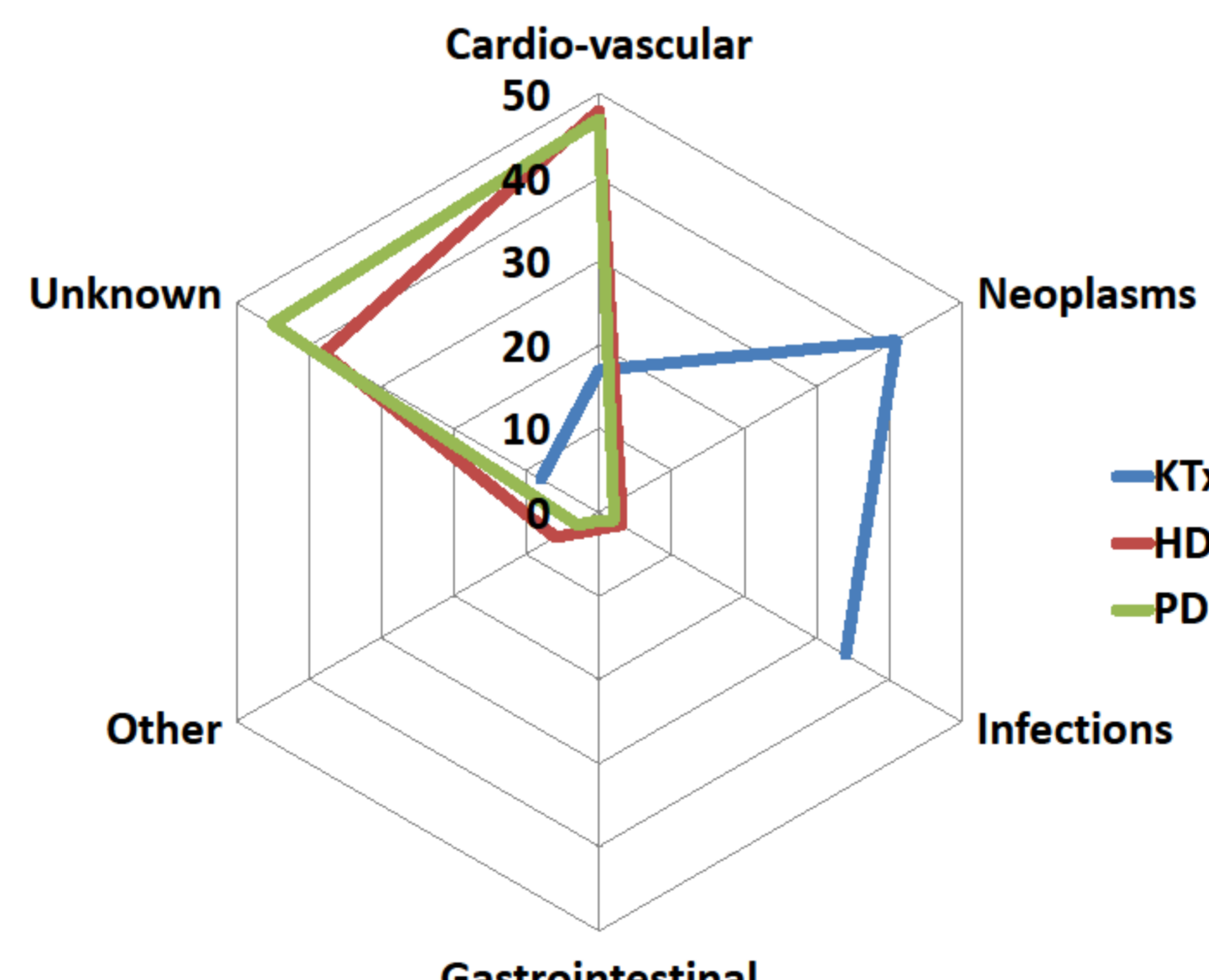
Survival analyses were conducted with the Kaplan-Meier method and log-rank test was used for comparisons. Variables related to survival were further evaluated in a multivariate Cox proportional hazard (CPH) model.

RESULTS

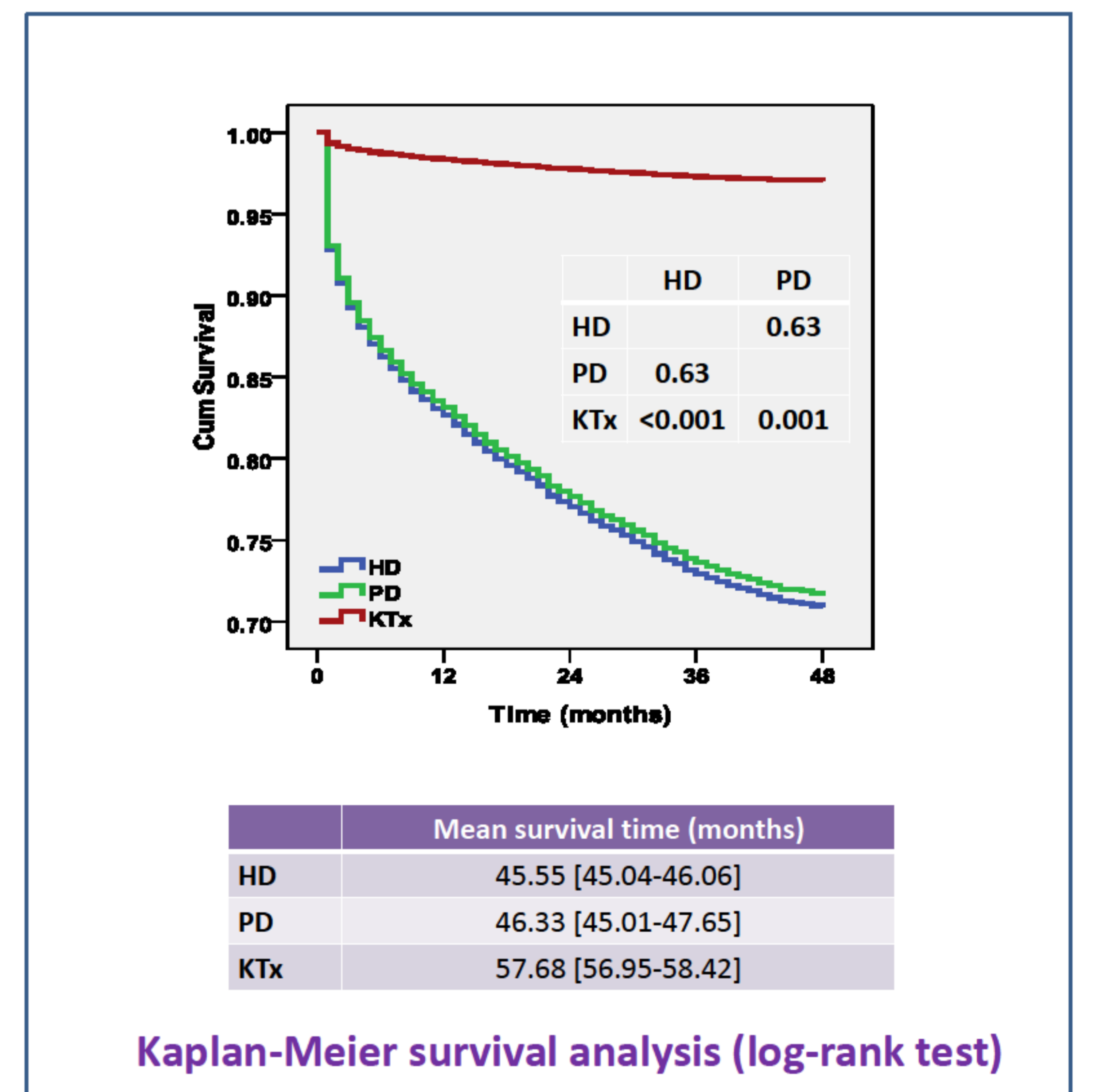
	Total	TR	HD	DP	p
N	9540	490	8050	1000	
Male (%)	57	64	58	51	<0,001



Mean survival time for the entire cohort



Death causes



Kaplan-Meier survival analysis (log-rank test)

Risk of death (Cox proportional hazard model)	HR	p
RRT vs KTx		<0.0001
HD	5.61	<0.0001
PD	5.63	<0.0001
Age	1.03	<0.0001
Gender: Female vs Male	0.94	0.5
Primary renal disease (vs. Vascular nephropathy)		<0.0001
Glomerulonephritis	0.75	0.004
Tubulointerstitial nephropathy	0.94	0.5
Hereditary nephropathy	0.62	0.0001
Diabetic nephropathy	1.25	0.01
Other/NA	1.13	0.1

CONCLUSIONS

The present study is the first to provide representative information about the outcome of the KTx patients in Romania. We found that Ktx patients' survival is markedly better than either on HD or PD. Urgent implementation of a KTx registry is needed in order to improve the national transplantation program.