



ILCA
conference
The world's leading liver cancer meeting
2 - 5 September 2021
WWW.ILCA2021.ORG

Impact of previous surgery on prognosis in patients with cholangiocarcinoma under chemotherapy

Margherita Rimini¹, Giovanni Brandi², Francesco Leone³, Lorenzo Fornaro⁴, Valentina Burgio⁵, Mariaelena Casagrande⁶, Nicola Silvestris^{7,8}, Francesco Montagnani³, Sara Lonardi^{9,10}, Eleonora Lai¹¹, Luca Falloppi¹², Daniele Santini¹³, Francesca Bergamo¹⁰, Andrea Palloni², Roberto Filippi^{14,15,16}, Caterina Vivaldi⁴, Nicoletta Pella⁶, Oronzo Brunetti⁸, Massimo Aglietta^{14,15}, Giorgio Frega², Maria Antonietta Satolli^{15,16}, Enrico Vasile⁴, Giuseppe Aprile⁶, Alessandro Rizzo², Rosella Spadi¹⁶, Gianluca Masi⁴, Mario Scartozzi¹¹, Eva Galizia¹², Elisa Sperti¹⁷, Francesca Ratti¹⁸, Luca Aldrighetti¹⁸, Stefano Cascinu⁵, Andrea Casadei-Gardini⁵.

1) Department of Medical Oncology, Hospital Policlinico of Modena, Italy. 2)Oncology Unit, Department of Experimental, Diagnostic and Specialty Medicine, Sant'Orsola-Malpighi Hospital. 3) Division of Medical Oncology, ASL BI, Nuovo Ospedale degli Infermi, Ponderano (BI), Italy 4) U.O. Oncologia Medica 2 Universitaria, Azienda Ospedaliero-Universitaria Pisana, Pisa (IT) 5) Department of Medical Oncology, IRCCS San Raffaele Hospital, Milan, Italy 6) University Hospital ASUFC, Udine, Italy 7) Department of Molecular Medicine, Faculty of Advanced Medical Sciences, Tabriz University of Medical Sciences, Tabriz 5166614766, Iran. 8) IRCCS Istituto Tumori "Giovanni Paolo II" of Bari, 70124 Bari, Italy. 9) Early Phase Clinical Trial Unit, Department of Oncology, Veneto Institute of Oncology IOV-IRCCS, Padua, Italy 10)Medical Oncology Unit 1, Department of Oncology, Veneto Institute of Oncology IOV - IRCCS, Padua, Italy. 11) Medical Oncology, University Hospital and University of Cagliari, Italy. 12) Medical Oncology Unit, Macerata General Hospital, Macerata - Italy. 13) Department of Medical Oncology, Campus Bio-Medico University of Rome, Rome, Italy. 14) Division of Medical Oncology, Candiolo Cancer Institute, FPO - IRCCS, Candiolo (TO), Italy. 15) Department of Oncology, University of Turin, Torino, Italy 16) Centro Oncologico Ematologico Subalpino, Azienda Universitaria Ospedaliera Città della Salute e della Scienza di Torino, Torino, Italy 17) Division of Medical Oncology, Ordine Mauriziano Hospital, Turin, Italy. 18) Hepatobiliary Surgery, San Raffaele Hospital, Milan, Italy.

BACKGROUND

Surgery is the only curative option for biliary tract cancer (BTC) patients, but recurrences are frequent. We investigated the role of previous surgery on survival in patients treated with chemotherapy.

METHOD

Data of 823 patients with advanced BTC from 15 Italian Institutions were retrieved. Survival outcomes depending on previous surgery received (or not) were analysed by the log-rank test and a Cox hazards model was performed.

CONCLUSIONS

A previous surgery is correlated to a better OS in patients treated with chemotherapy for advanced BTC, chiefly in iCCA.

RESULTS

The overall survival (OS) was 17.9 (95% CI, 15.2-49.9), 13.1 (95% CI, 7.7-16.9) and 10.1 (95% CI, 9.2-15.9) months for patients treated with R0 resection, R1/2 resection and no surgery, respectively. In the subgroup with intrahepatic cholangiocarcinoma (iCCA), we highlighted an OS of 20.7 (95% CI, 16.6-49.9), 18.1 (95% CI, 4.6-25.7) and 11.1 months (95% CI, 9.7-81.4) in patients previously treated with R0 resection, R1/2 resection and no surgery, respectively. In the subgroup with extrahepatic cholangiocarcinoma (eCCA), we highlighted an OS of 14.0 (95% CI, 11.1-22.5), 16.9 (95% CI, 11.1-22.5) and 10.2 months (95% CI, 7.8-12.0) in patients previously treated with a R0 resection, R1/2 resection and no surgery, respectively. In the subgroup with gallbladder cancer (GBC), we highlighted an OS of 17.2 (95% CI, 6.8-22.6), 6.7 (95% CI, 4.1-26.3) and 8.3 months (95% CI, 7.3-9.3) in patients previously treated with R0 resection, R1/2 resection and no surgery, respectively. Finally, patients no-resected showed a poorer OS to second line compared those previously resected (95% CI, 1.51-3.71).

Table 1. Patients characteristics

Characteristics	No Surgery	Surgery with R0	Surgery with R1/2	p	
Female	48.1	49.4	44.7	0.89	
Male	51.9	50.6	55.3		
Intrahepatic	64.2	49.4	31.6	<0.0001	
Extrahepatic	18.4	34.2	31.6		
Gallbladder	17.4	16.4	36.8		
Locally advanced	5.9	12.6	21.0	0.0004	
Metastatic disease	94.1	87.4	79.0		
Drainage				0.0045	
Yes	25.9	10.1	32.4		
No	74.1	89.9	67.6		
ECOG				0.0052	
0	37.9	54.4	50.0		
1	52.1	43.0	34.2		
>1	10.0	2.6	15.8		
Chemotherapy				<0.0001	
Platinum plus gem	70.2	94.9	93.8		
Others	29.8	5.1	6.2		
Maximum response				0.34	
CR+RP	19.0	22.4	21.6		
SD	30.5	38.1	38.9		
PD	50.5	39.5	39.5		
Ca	19.9	157 (128-192)	96 (65-255)	140 (58-616)	0.39
Bilirubin	0.76 (0.70-80)	0.66 (0.56-0.73)	0.71 (0.50-0.74)		0.04

Figure 1. Kaplan Mayer for OS (A) and PFS (B) in first-line chemotherapy according to the previous surgery treatment.

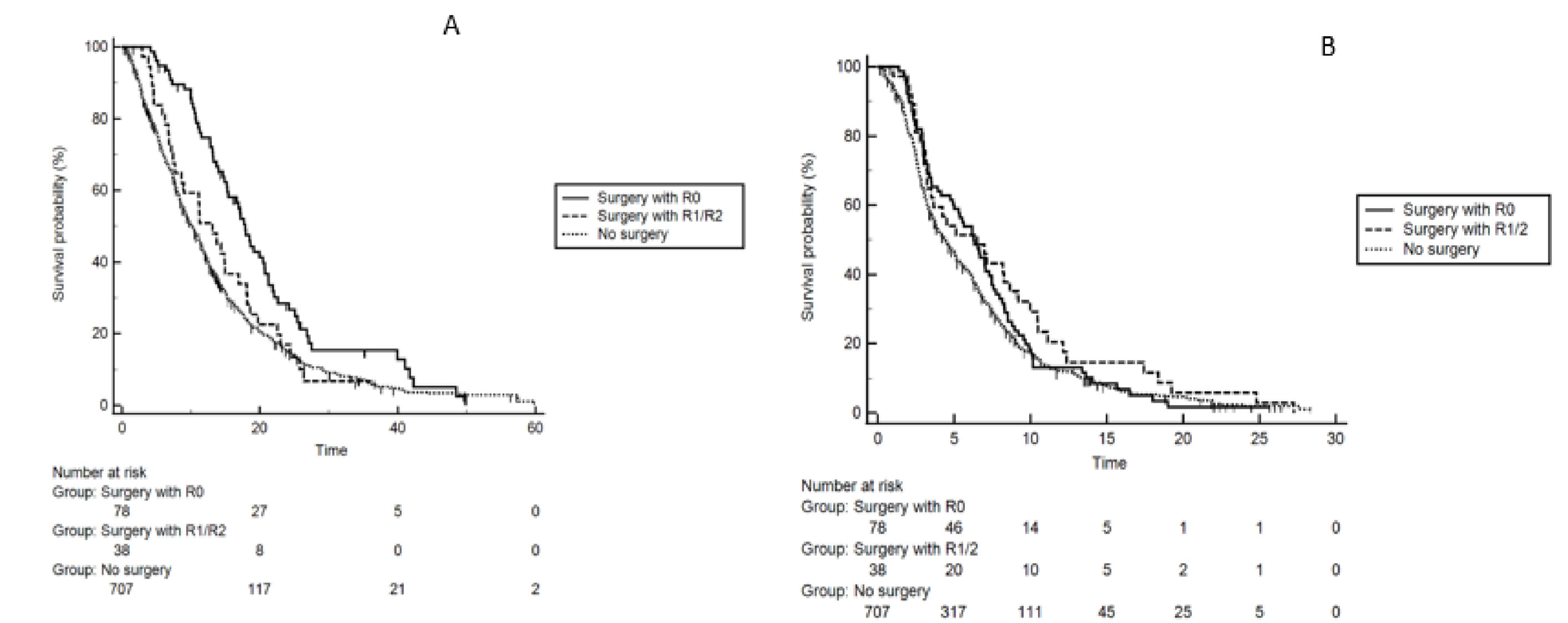
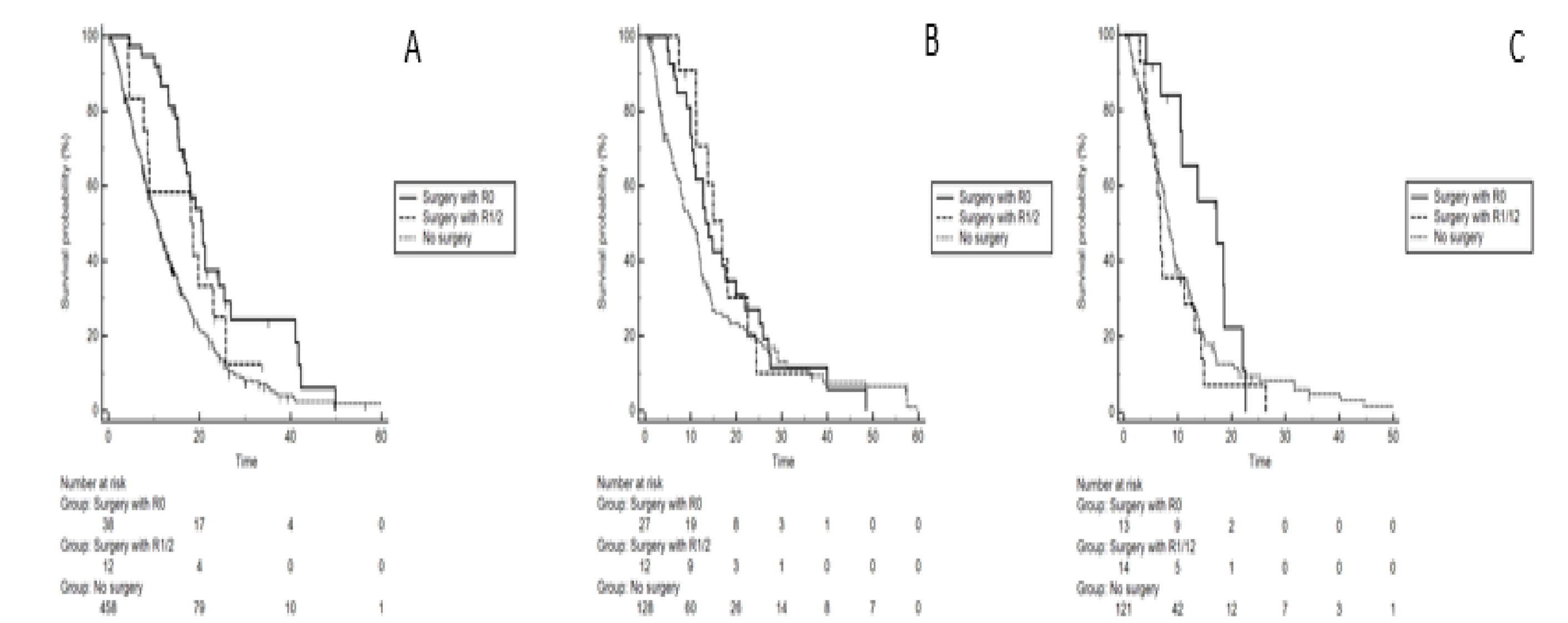


Figure 2. Kaplan Mayer for OS in first-line chemotherapy according to the previous surgery treatment in iCCA (A), eCCA (B) and GBC (C).



REFERENCES

- McNamara MG, Aneja P, Maganti M, Horgan AM, Cleary S, Knox JJ. Do recurrent and de novo metastatic biliary tract cancer patients have the same outcome on treatment? *Journal of Clinical Oncology* 33, no. 3_suppl (January 20, 2015) 351-351.
- McNamara MG, Templeton AJ, Maganti M, Walter T, Horgan AM, McKeever L, Min T, Amir E, Knox JJ. Neutrophil/lymphocyte ratio as a prognostic factor in biliary tract cancer. *Eur J Cancer*. 2014 Jun;50(9):1581-9.
- Kobayashi S, Terashima T, Shiba S, Yoshida Y, Yamada I, Iwadou S, Horiguchi S, Takahashi H, Suzuki E, Moriguchi M, Tsuji K, Otsuka T, Asagi A, Kojima Y, Takada R, Morizane C, Mizuno N, Ikeda M, Ueno M, Furuse J. Multicenter retrospective analysis of systemic chemotherapy for unresectable combined hepatocellular and cholangiocarcinoma. *Cancer Sci*. 2018 Aug;109(8):2549-2557.
- Ohira M, Kobayashi T, Hashimoto M, Tazawa H, Abe T, Oshita A, Kohashi T, Irei T, Oishi K, Ohdan H; Hiroshima Surgical study group of Clinical Oncology (HiSCO). Prognostic factors in patients with recurrent intrahepatic cholangiocarcinoma after curative resection: A retrospective cohort study. *Int J Surg*. 2018 Jun;54(Pt A):156-162.

CONTACTS

Margherita.rimini@gmail.com
casadeigardini@gmail.com