



44th EUROPEAN
CYSTIC FIBROSIS
CONFERENCE
9-12 June 2021
#ECFS2021

CFHEALTHHUB: A DIGITAL LEARNING HEALTH SYSTEM SUPPORTING VIRTUAL CLINICS AND SELF-CARE ACROSS 60% OF UK ADULT CF CENTRES: A SURVEY TO UNDERSTAND BENEFITS AMONGST THE NATIONAL CFDIGICARE COMMUNITY

J. CUNNINGHAM¹, S. DAWSON², C. CAROLAN³, I. DAVIDS⁴ and M. WILDMAN³.

1. Frimley Park Hospital, Cystic Fibrosis Unit, Frimley, United Kingdom

2. Nottingham University Hospitals NHS Trust, Wolfson Adult CF Centre, Nottingham

3. Sheffield Teaching Hospitals NHS Foundation Trust, Sheffield, United Kingdom

4. University of Sheffield, Clinical Trials Research Unit, Sheffield, United Kingdom



Frimley Health
NHS Foundation Trust



INTRODUCTION

CFHealthHub is a digital learning health system (LHS) supporting over 1500 people with CF (PWCF) across 17 UK CF centres. The focus is to:

- Provide real-time FEV1, weight/ BMI, and nebuliser-usage data to enhance clinical decision-making
- Equip clinicians with the tools to support adherence in routine care
- Support PWCF in building habits for treatment-taking
- Reduce medicines waste via 'just-in-time' supply.

AIM

- To explore clinicians' views of how CFHealthHub has been implemented at scale in UK adult CF centres.
- To understand the impact of the CFHealthHub LHS on CF self-care by surveying the CFDigiCare members using CFHealthHub in UK adult CF Centres.
- Respondents included CF clinicians, academics and PWCF.

METHOD

An online survey comprising closed questions and one open-ended question was distributed to all 154 CFDigiCare members by email.

RESULTS

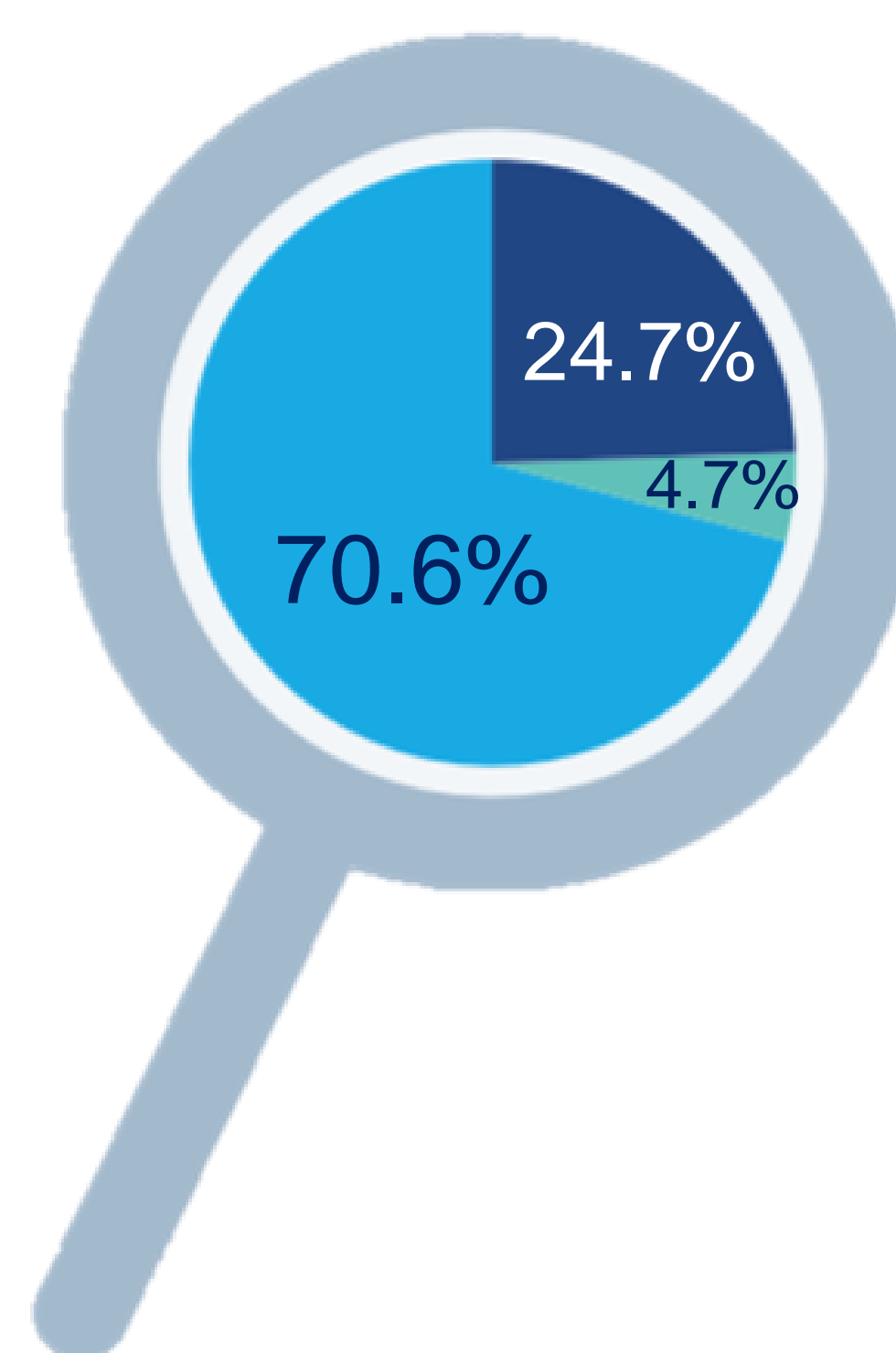
85 CFDigiCare members responded (55% response rate) from across the multidisciplinary team. This included 18 doctors/ consultants, 14 nurses, 23 physiotherapists, 6 pharmacists, 7 dieticians and 7 PWCF. The graphics show a selection of the results from the survey.

KEY

Strongly agree
Agree

Neither agree nor disagree
Disagree

95% of CFDigiCare members either **agree or strongly agree** that CFHealthHub makes the 'invisible visible' by providing an objective measure of patient adherence.

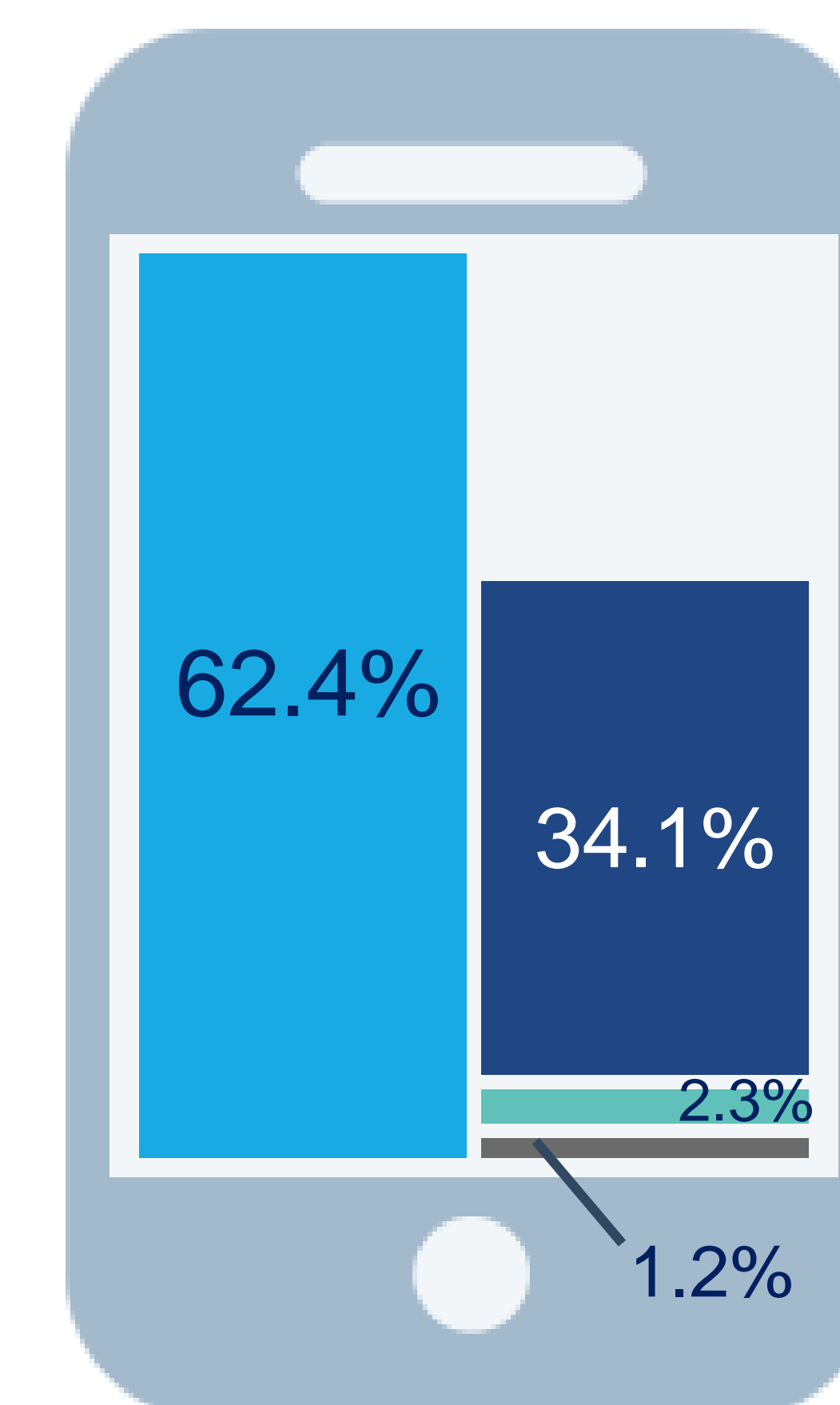
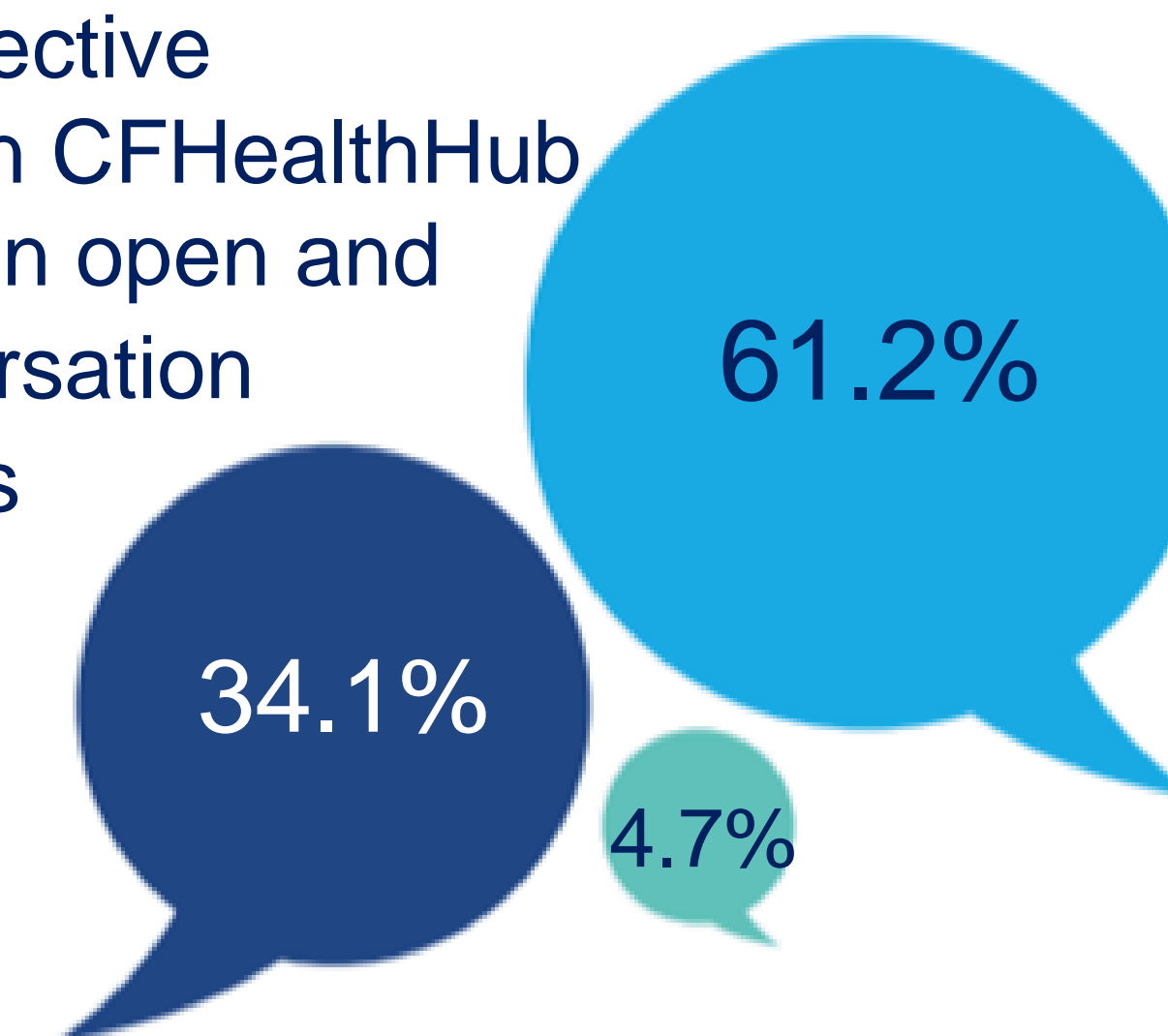


97% of CFDigiCare members either **agree or strongly agree** that CFHealthHub has the potential to support shared learning and provides a national support network.

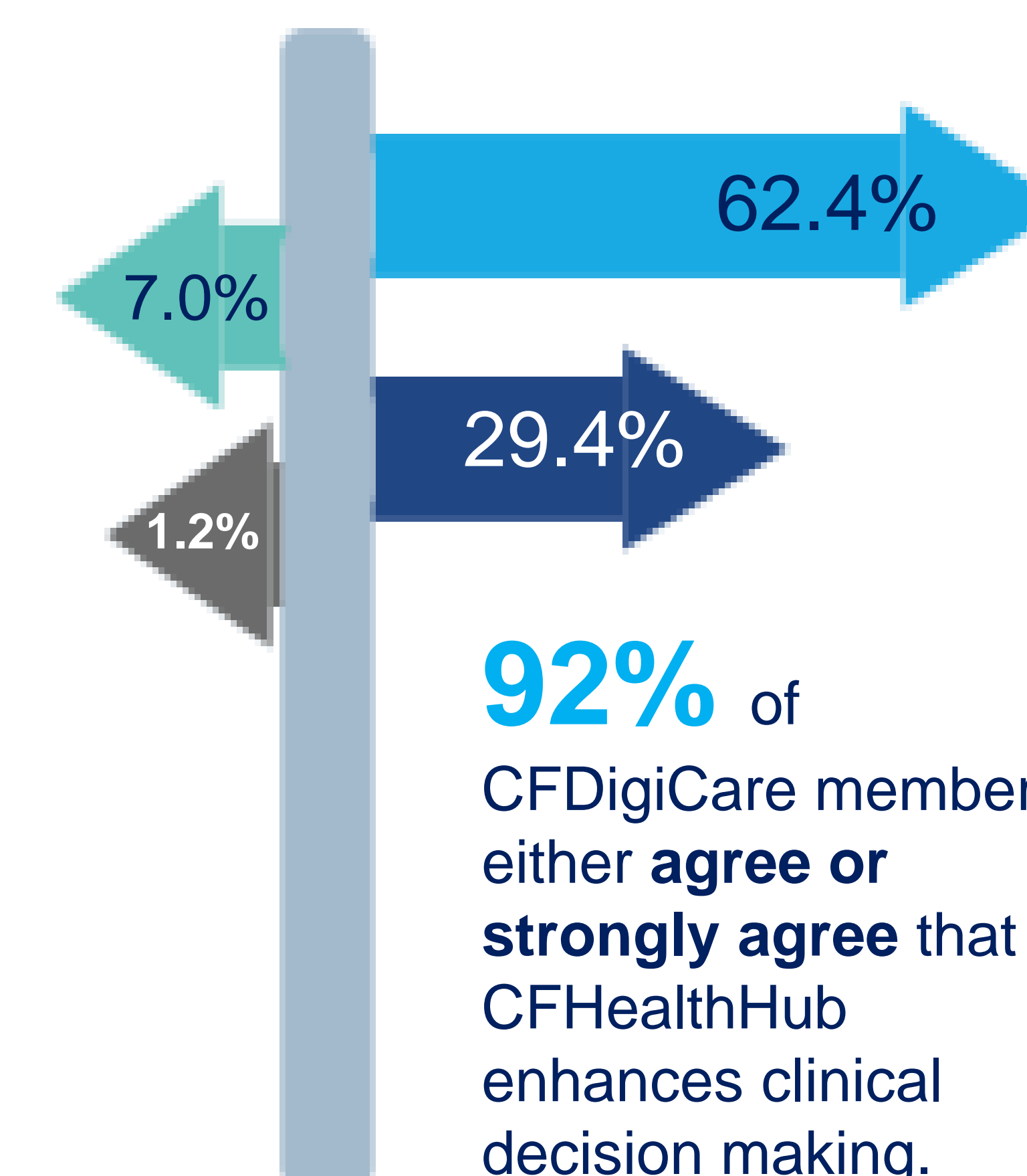


"The ability to objectively view my treatment adherence and to discuss this with my clinical team with greater accuracy has been invaluable"

95% of CFDigiCare members either **agree or strongly agree** that having easy access to objective information on CFHealthHub can support an open and honest conversation that improves patient-practitioner relationships.



97% of CFDigiCare members either **agree or strongly agree** that CFHealthHub makes it easier to optimise the delivery of virtual care by providing tools to embed remove monitoring in routine care.



92% of CFDigiCare members either **agree or strongly agree** that CFHealthHub enhances clinical decision making.

CONCLUSIONS

The perceived benefits of CFHealthHub amongst the CFDigiCare community include:

- Benefits for PWCF (e.g. patient empowerment; adherence support; improved patient-practitioner relationship)
- Benefits for CF teams (e.g. shared learning through national support network; enhancing virtual care delivery; clinical decision-making);
- Organisational benefits (e.g. potential to deliver cost savings through medicines optimisation).

The overall feedback was positive from both clinicians and PWCF. Survey results will be used to identify new ways to continue improving CFHealthHub to benefit PWCF and CF teams across the UK.

"CFHealthHub is a gamechanger that has the potential to transform CF care, and enables CF teams to focus on prevention and support people with CF more effectively."

ACKNOWLEDGEMENTS

Many thanks to all the members of CFDigiCare who provided this valuable insight into the benefits of CFHealthHub, and to Simon Foster at University of Manchester for the infographics provided for this poster.

CONTACT INFORMATION

- Josie Cunningham: josie.Cunningham@nhs.net

@cfhealthhub

cfhealthhub.com

